



Exercise Questions

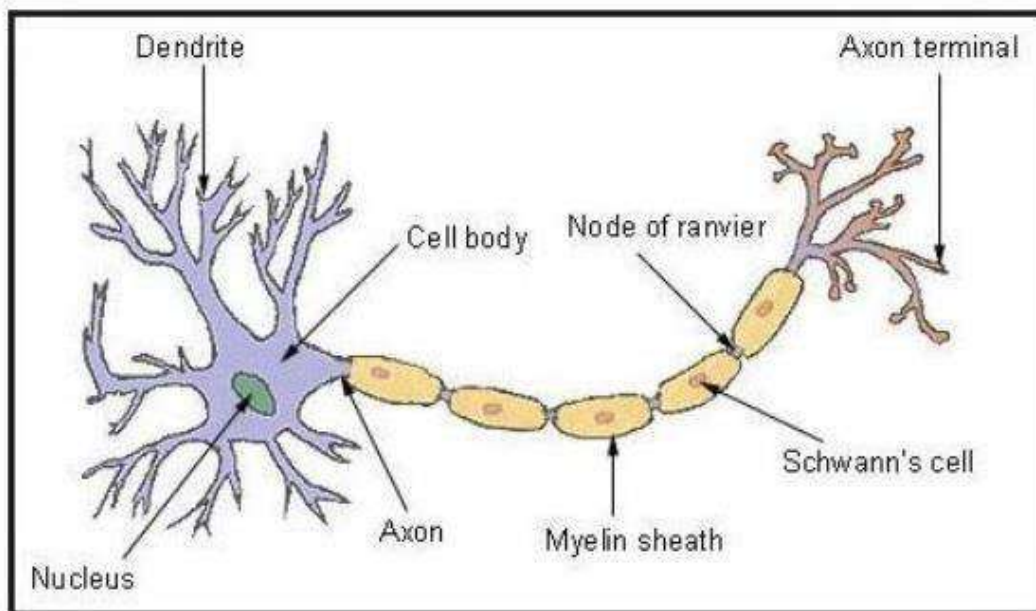
1. Indicate whether the following statements are True (T) or False (F).

- (a) Unicellular organisms have one-celled body. (T/F)
- (b) Muscle cells are branched. (T/F)
- (c) The basic living unit of an organism is an organ. (T/F)
- (d) Amoeba has irregular shape. (T/F) Soln:

- a) True
- b) False
- c) False
- d) True

2. Make a sketch of the human nerve cell. What function do nerve cells perform?

Soln:



The main function of the nerve cell is to transmit messages to the brain from receptor organs and vice versa. It has control over the working of different parts of the body.

3. Write short notes on the following.

- (a) Cytoplasm
- (b) Nucleus of a cell

Soln:

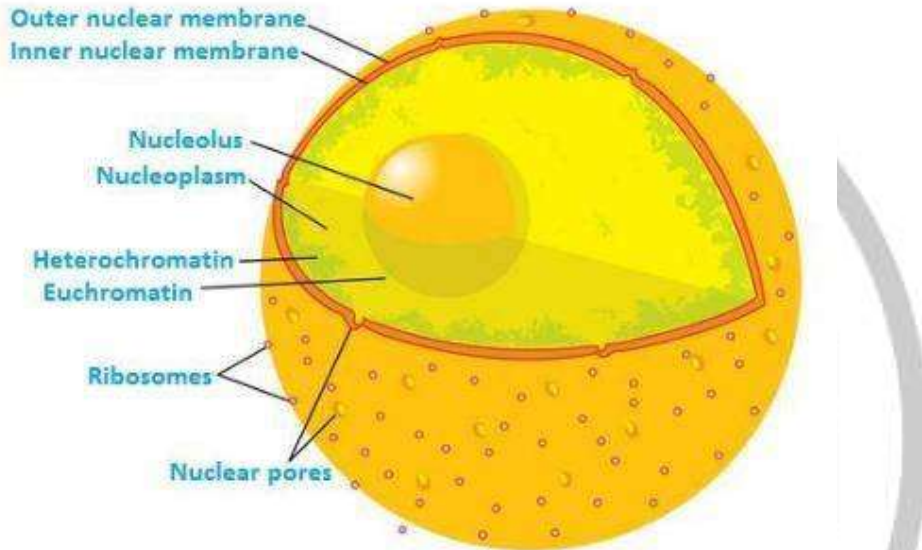


(a) Cytoplasm:

The cytoplasm is a fluid that contains all the cell organelles, such as the Mitochondria, Ribosomes, Golgi Bodies, etc. It is present between the nucleus and the plasma membrane. It helps in the exchange of materials between cell organelles. It is made up of eighty per cent water and is usually clear and colourless.

(b) Nucleus of a cell:

The nucleus is a double-membrane bound cell organelle present in eukaryotic cells. It contains the DNA, the genetic material. It is the command centre of the cell and is spherical in shape. It has the following components:



- Nuclear membrane
- Nucleolus
- Chromosomes

1. **Nuclear membrane:**

It has a double-layered membrane. It separates the contents of the nucleus from the cytoplasm and acts as a wall. It has pores that allow the transfer of certain substances in and out of the cell.

2. **Nucleolus:**

It is a small dense spherical body. It is not bound by any membrane.

3. **Chromosome:**

These are thread-like structures that carry genes. All the necessary information required for the transfer of characteristics from the parents to the offspring is stored in the genes. Inheritance of characteristics is possible only because of chromosomes.

4. **Which part of the cell contains organelles?**



Soln:

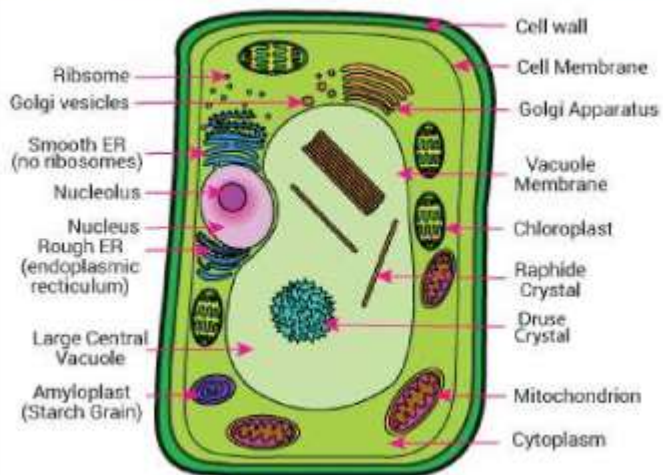
Various cell organelles are present in the cytoplasm. It is a clear and colourless fluid that contains organelles like Mitochondria, Ribosomes, and Golgi Bodies.

5. Make sketches of animal and plant cells. State the differences between them.

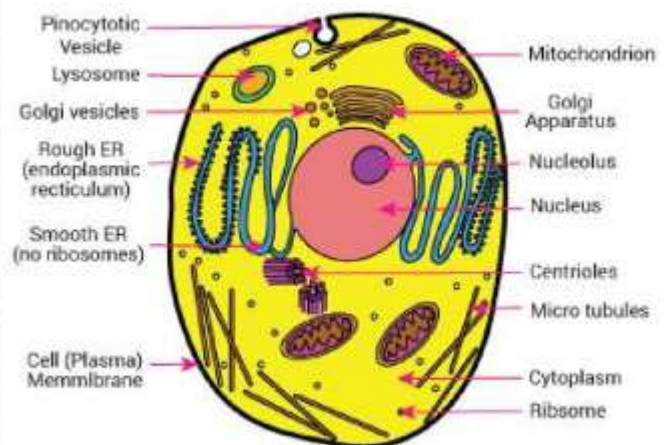
Soln:

Plant cell	Animal cell
They are large in size	They are smaller than plant cells
The cell wall is present	The cell wall is absent
Vacuoles are large	Vacuoles are small
Plastids could be seen	Except for Euglena, plastids could not be seen in animal cells.

Plant Cell



Animal Cell



6. State the difference between eukaryotes and prokaryotes.



Prokaryotes

Most of them are unicellular

There is no nuclear membrane. So, the nucleus is poorly defined.

Not all cell organelles are present

Nucleolus is absent

For example, blue-green algae, Bacteria

Eukaryotes

Most of them are multicellular

There is a nuclear membrane. So, the nucleus is well-defined.

All the cell organelles are present.

Nucleolus is present

For example, plants, animal cells and fungi.

7. Where are chromosomes found in a cell? State their function.

Soln:

Chromosomes are thread-like structures present in the nucleus that carry genes. All the necessary information required for transferring characteristics from the parents to the offspring is stored in the genes. Inheritance of characteristics is possible only because of chromosomes.

8. “Cells are the basic structural units of living organisms”. Explain.

Soln:

Various components of plants and animals are constituted by cells. It is the smallest unit of life and is capable of all living functions. They are the building blocks of life. That is the reason why cells are referred to as ‘the basic structural and functional blocks of life’.

Cells exist in various shapes and sizes and perform a wide range of activities.

Their shapes and sizes are related to the function it performs.



9. Explain why chloroplasts are found only in plant cells.

Soln:

Chloroplasts are plastids required for the food-making process called photosynthesis, and thus they are only present in plant cells.

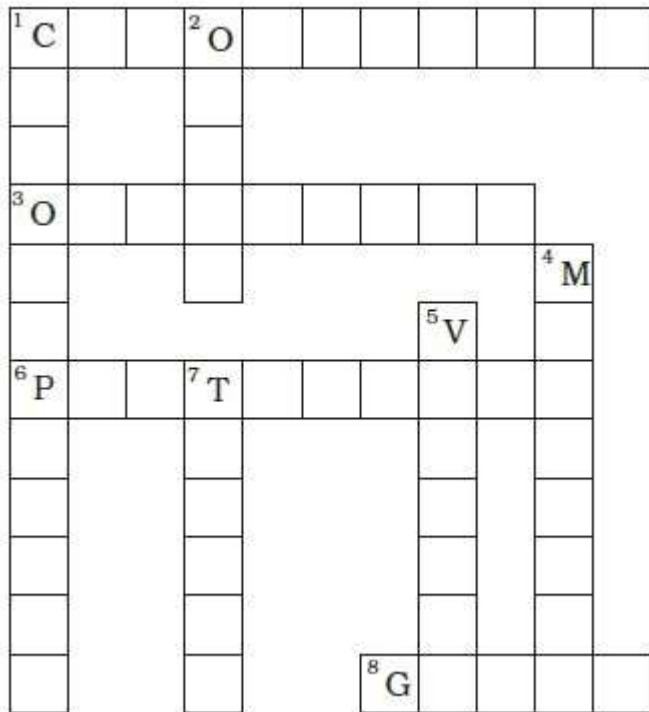
10. Complete the crossword with the help of the clues given below.

Across

1. This is necessary for photosynthesis.
3. Term for component present in the cytoplasm.
6. The living substance in the cell.
8. Units of inheritance present on the chromosomes.

Down

1. Green plastids.
2. Formed by a collection of tissues.
4. It separates the contents of the cell from the surrounding medium.
5. Empty structure in the cytoplasm.
7. A group of cells.



Soln:

Across

1. Chlorophyll
2. Organelle
3. Protoplasm
4. Genes

Down

1. Chloroplast
2. Organ
3. Membrane
4. Vacuole
5. Tissue

